



LCS

lighting core solutions



LCS Lighting Core Solutions

Light that works for You

Welcome to the world of LCS Lighting Core Solutions – a new brand from LUG Light Factory, created for those who need reliable, functional and accessible lighting solutions. It is a response to real market challenges – where time, precision and quality matter.

Contemporary spaces – offices, halls, shops or technical facilities – need light that not only illuminates, but also genuinely supports everyday work. LCS is light that understands the user's needs: easy to install, durable in operation, ready when you need it most.

LCS Lighting Core Solutions is the power of simplicity and efficiency – we offer modern LED luminaires that combine high luminous efficacy (up to 167 lm/W), durability (up to 107,000 hours), compatibility with DALI systems and fast delivery times. All this at a competitive price, without compromising on quality.

Discover a range of products designed for architects, installers and investors. These are solutions that work. And that work for you.

OUR VALUES

- Efficiency and energy savings – luminaires with high luminous efficacy up to 167 lm/W.
- Simple and quick installation – products designed for efficient installation.
- Availability – short delivery times, even for larger orders.
- Durability – service life of up to 107,000 hours (L80B10).
- Flexibility – standard and DALI versions available.
- Best value for money – competitive price with the highest technical parameters.

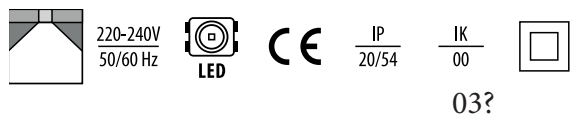
APPLICATIONS

Lighting Core Solutions products are ideal for the following spaces:

- office
- commercial and service
- industrial and technical
- architectural (e.g. halls, corridors, back rooms)
- spaces with increased moisture resistance (IP66)



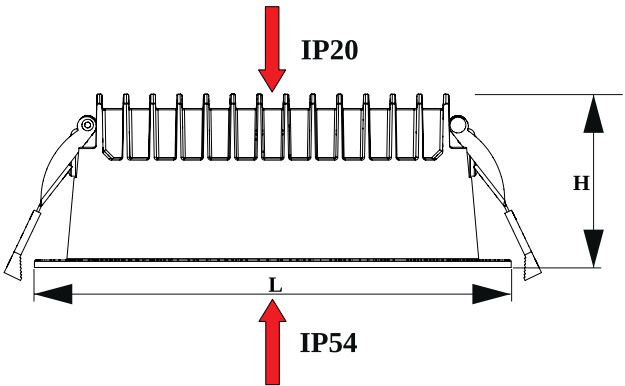
LCS DOWNLIGHT



Decorative downlight luminaire for installation in suspended ceilings with IP20/54 protection for LED light sources.

- Perfect combination of aesthetics and ergonomics
- Fast and easy mounting
- Modern design
- Reliability
- Passive cooling system
- Simple one person mounting
- High efficacy to 156 lm/W

Luminaire power	106 - 156 [W]
Lumen luminaire	1200 - 5100 [lm]
Efficacy	106 - 156 [lm/W]
Colour temperature	3000, 4000
ULOR/DLOR	0/100
Power	220-240V 50/60Hz
CRI	≥80
Lifetime L80B10	100 000 h
Body	aluminum profile
Body colour	white
Operating temperature range	0 ... +35



Dimensions	
LxH	110x50 165x60 220x69
Mounting	in the ceiling
Net weight	0,27 - 0,87 [kg]

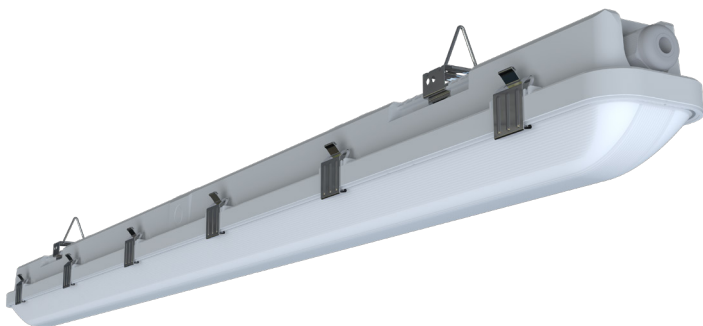


Accessories

matt ring



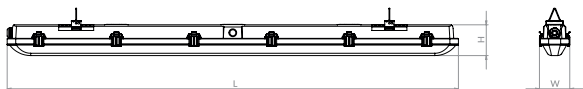
LCS WATERPROOF



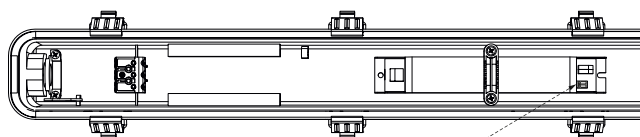
Hermetic LED luminaire, water-jet proof, intended for mounting inside industrial or architectural objects.

- Perfect combination of aesthetics and ergonomics
- The ideal luminaire for tough working conditions
- Fast and easy mounting
- Modern design
- Reliability
- Passive cooling system
- Simple one person mounting
- High efficacy to 167 lm/W

Luminaire power	38/50 [W]
Lumen luminaire	6350/8350 [lm]
Efficacy	167 [lm/W]
Colour temperature	4000
ULOR/DLOR	0/100
Power	220-240V 50/60Hz
CRI	80
Lifetime L80B10	107 000 h
Body	polycarbonate
Body colour	light gray
Operating temperature range	-25 ... +45



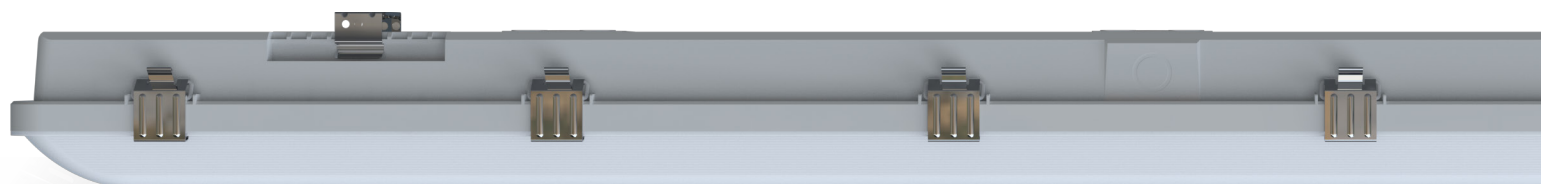
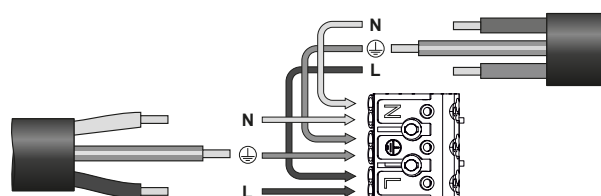
Dimensions LxWxH	1165x76x81
	1465x76x81
Mounting	suspended, on chains, surface mounted, with mounting brackets (included)
Net weight	1,4 - 1,6 [kg]



DIP switch, on/off only

1500mm	1200mm
30 - 50 [W]	22 - 38 [W]
5000 - 8350 [lm]	3750 - 6350 [lm]

Loopable



LCS PANEL



220-240V
50/60 Hz

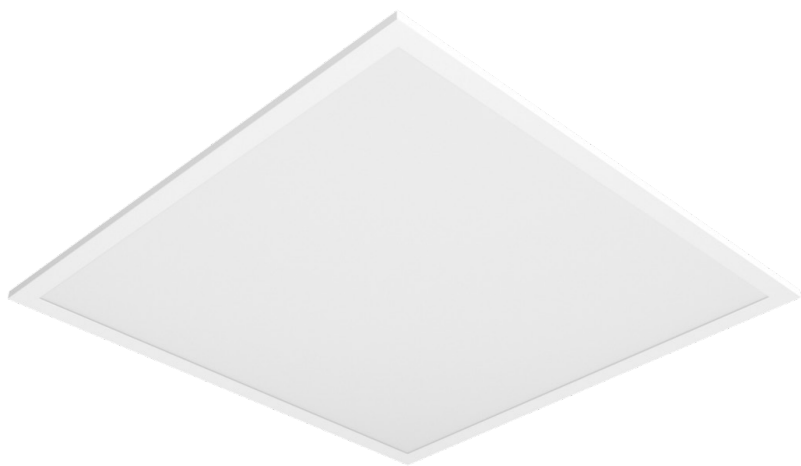


IP
20

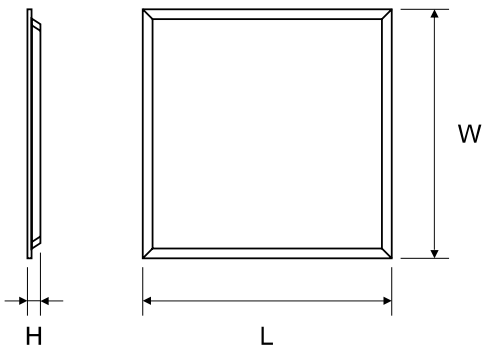
IK
03



Modern recessed luminaire for LED light sources.



Luminaire power	28 [W]
Lumen luminaire	4200 [lm]
Efficacy	150 [lm/W]
Colour temperature	4000
ULOR/DLOR	0/100
Power	220-240V 50/60Hz
CRI	≥80
Lifetime L80B10	100 000 h
Body	powder-painted steel sheet
Body colour	white
Operating temperature range	0 ... +35



Dimensions LxWxH	595x595x35
Mounting	in the ceiling
Net weight	1,8 [kg]

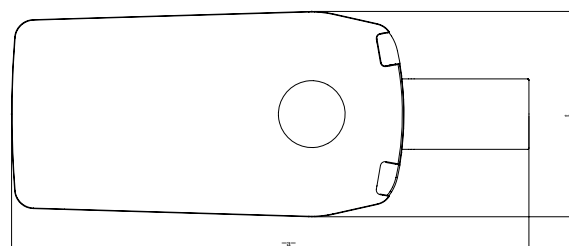
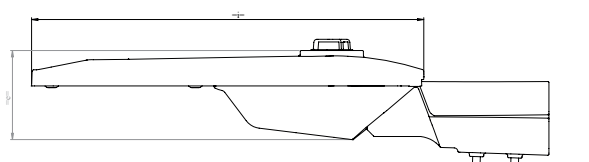


LCS ROAD

LCS Road - infrastructure lighting luminaire for the Public Lighting segment - designed for durability and functionality in the most demanding operating conditions. The body is made of powder-coated aluminium, ensuring high resistance to corrosion, mechanical damage and adverse weather conditions, which translates into a long product life. Thanks to its modern design, the luminaire is an aesthetic addition to the infrastructure product portfolio, in line with current trends in urban space design. The use of an adjustable mounting bracket and a wide range of available light beams and optical systems allows the luminaire to be precisely adapted to a variety of traffic situations – from lighting main thoroughfares and residential streets to cycle paths and car parks.

- **Modern design**
- **Aluminium body**
- **Dedicated LED sources**
- **High efficiency up to 162 lm/W**

Luminaire power	18.9 - 157.8 [W]
Lumen luminaire	2800 - 6900 [lm]
Efficacy	26-162 [lm/W]
Colour temperature	3000, 4000
ULOR/DLOR	0/100
Power	220-240V 50/60Hz
CRI	>70
Lifetime L80B10	100 000 h
Body	high-pressure die-cast aluminium
Body colour	gray
Operating temperature range	-40 ... +55



Dimensions LxWxH	410x215x92x543
Mounting	on a 60 mm pole, on a 60 mm bracket, using brackets (included)
Net weight	3.4 [kg]





LUG Light Factory

ul. Gorzowska 11
65-127 Zielona Góra
e-mail: lug@lug.com.pl
tel.: + 48 68 45 33 200