

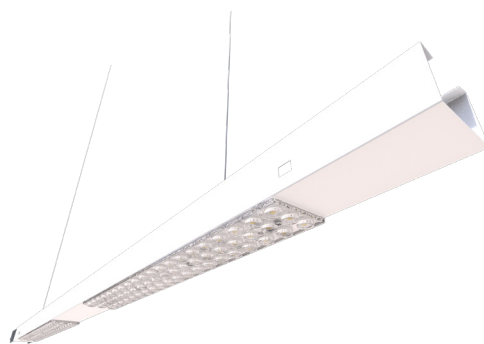
# Lighting for Retail-Spaces

# Proper light of commercial premises

according to EN-12464-1



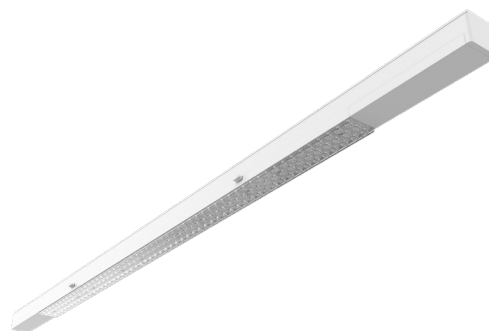
TINO 2.0



LUGTRACK SLIM LENS  
RETAIL version



CALIBRO 2.0 SHOP LED



LUGTRACK EVO 2.0

# Lighting

1

## General sales area

- $E_m - 300 \text{ lx}$
- $UGR < 22$
- $R_a \geq 80$
- $U_o \geq 0,40$

2

## Dressing room

- $E_m - 300 \text{ lx}$
- $U_o \geq 0,40$
- $R_a \geq 90$

3

## Till area

- $E_m - 500 \text{ lx}$
- $UGR < 19$
- $R_a \geq 80$
- $U_o \geq 0,60$

4

## Wrapper table

- $E_m - 500 \text{ lx}$
- $UGR < 22$
- $R_a \geq 80$
- $U_o \geq 0,60$

5

## Storage area

- $E_m - 300 \text{ lx}$
- $UGR < 25$
- $R_a \geq 80$
- $U_o \geq 0,40$





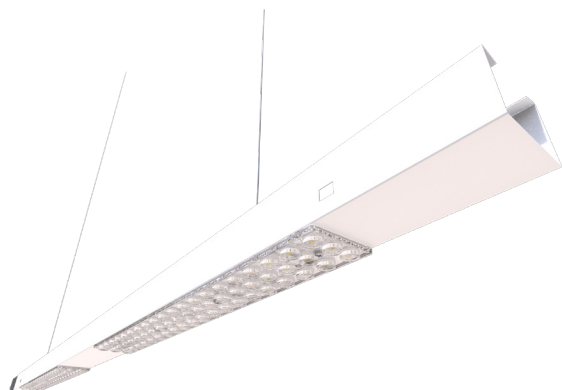


Lighting the sales area - the key to an attractive and efficient space.

The first impression is of immense importance, and proper lighting of store aisles plays a crucial role in this. **LUGTRACK SLIM LENS - RETAIL** version provides uniform lighting of sales surfaces, customer safety, and shopping comfort.



# Sales area



Keyspace for both investors and customers. Typically, due to its size, it generates the highest energy consumption, which is why it is so important to implement the most precise and efficient solutions. Moreover, the replacement of T5 and T8 fluorescent bulbs is becoming not only a privilege but an obligation due to the European Union's ban on the sale of fluorescent lamps.

## LUGTRACK SLIM LENS RETAIL version

LUGTRACK SLIM LENS retail version is a modern, quick-assembly line designed for illuminating large commercial interiors such as supermarkets, manufacturing facilities, and warehouses - anywhere the risk of potential changes in interior design is high. A wide range of optics and lumen output cater to future, yet unspecified needs and provide the possibility of dynamically adapting to continuously evolving conditions.

### Assumptions

Space [m2]	1021,46
Energy cost [EUR/kWh]	€ 0,40
Working hours [h/year]	16
Working days [days/year]	300

**LUGTRACK SLIM LENS 1500 ED**  
6200lm 35W 4000K 90°  
symmetrical white (retail version)

**Quick-assembly**  
lines 2x48W

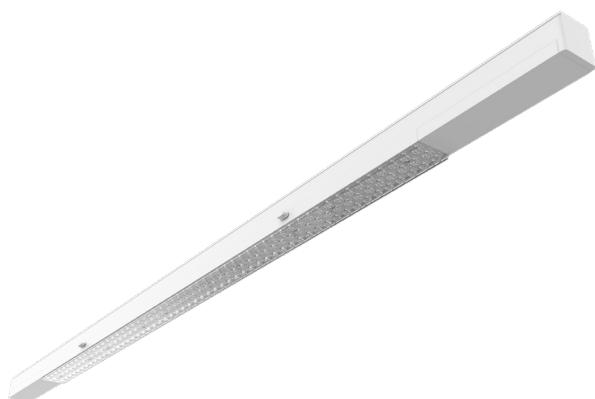
Luminaire power [W]	35	96
Luminaire quantity [pcs]	162	162
Energy cost [EUR/kWh]	€ 0,40	€ 0,40
Working hours [h/day]	16	16
Working days per year	300	300
Energy use [kWh/1pc]	0,035	0,096
Energy use [kWh/year]	27 216	74 650
Energy cost [EUR/year]	€ 10 887,00	€ 29 860,00
<b>Savings [EUR/year]</b>	<b>€ 18 973,00</b>	
<b>Savings[%]</b>	<b>64%</b>	







# Till area

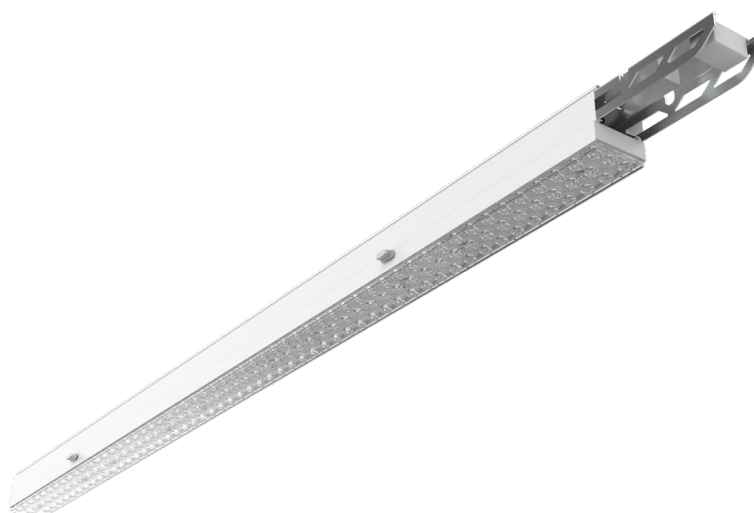


LUGTRACK EVO 2.0 - thanks to its modular construction, it is exceptionally versatile and suitable wherever potential changes in interior design are high. The support rail, set at the very beginning, provides a constant element independent of the evolving situation. The ability to attach various lighting modules with a wide range of optics, along with 5, 8, and 12-wire cabling, allows for the selection of the ideal solution, enabling connection to control systems or emergency luminaires.

## LUGTRACK EVO 2.0

Modern lighting not only creates comfortable working conditions but also often enhances sales potential through the proper presentation of individual products.

Luminaire power	75 - 133 W
Lumen luminaire	12600 - 20600 lm
Efficacy	up to 170 lm/W
Colour temperature	4000 K
CRI/Ra	≥80
Operating temperature	0 ... +35°C







# Spotlights



## TINO 2.0

Spotlights play a significant role in exposing. It highlights specific features, shapes, colours, or surface textures of the illuminated item.



### Efficacy

### CRI/Ra

up to 162 lm/W 80

up to 154 lm/W 90

Luminaire power

13 - 38,3 W

Lumen luminaire

1850 - 5150 lm

Colour temperature

3000, 4000 K

Operating temperature

0 ... +35°C

**The Color Rendering Index (CRI)** is the fundamental measure of lighting quality, determining the degree of conformity of the actual colour to its appearance under artificial lighting. It is expressed as a number ranging from 0 to 100. The higher the index, the more natural the illuminated objects appear. A higher CRI makes the illuminated item more appealing to customers' eyes.







# Spotlights

## SHOP version



### CALIBRO 2.0 SHOP LED

Stand out in the market and entice customers to make purchases by offering them attractive and appetizing visual experiences through our range of projectors specifically designed for food lighting

Luminaire power	18 - 26 W
Lumen luminaire	1050 - 2450 lm
Efficacy	up to 100 lm/W
CRI/Ra	80, 90
Operating temperature range	0 ... +35°C



**Type:** Meat and sausages, vegetables and fruits, art, fashion, cheese and bread, wine, whiskey, cognac.



For years, we have been developing our products based on the circular economy model. Our main goal is to reduce environmental impact by organizing production processes in the most sustainable manner possible. We promote closed-loop resource production, where both our mechanical and electronic components are suitable for reuse. Already in the design phase, our aim is to create durable products that are easy to service. The selection of individual components focuses on close collaboration with suppliers to ensure the highest quality materials, resulting in the durability of our solutions and, of course, a reduction in CO2 emissions.

Demanding Excellence Years of experience in product lifecycle management, from initial sketches through the design, production, delivery, and disposal, allow us to optimize at every stage of the cycle and monitor the length of usage. We share our experiences by conducting educational campaigns on the benefits of using energy-efficient lighting fixtures and methods for handling withdrawn products.

We test our fixtures to meet the most rigorous requirements, facilitating positive assessments and certifications for sustainable buildings like **LEED (Leadership in Energy and Environmental Design)** or **BREEAM (Building Research Establishment Environmental Assessment Method)** for investors using our solutions.

We know how to manufacture and deliver high-quality products with durability and parameters exceeding common standards:

- Minimal dimensions
- Above-average luminous efficacy
- Modularity within the product family
- Precise optical systems
- Highest quality components
- Optimized production processes

Positioning us as leaders in the lighting industry, driving our motivation forward.



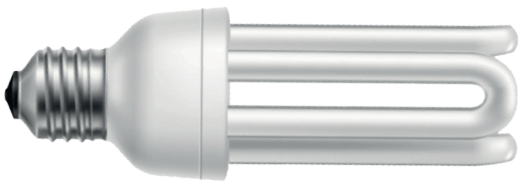






# It is happening!

Prepare yourself for  
the EU's fluorescent  
lights ban.



CFL



T8



T5



We got  
you covered!





RoHS Directive

EU laws restrict the use of certain hazardous substances in electrical and electronic equipment through the RoHS Directive. During the use, collection, treatment and disposal of such waste, products may release harmful (hazardous) substances such as lead, mercury and cadmium, which can cause major environmental and health problems.

**All products with an electrical and electronic component, unless specifically excluded, have to comply with these restrictions.**

**From 24 February 2023, the following light sources will be phased out:**

- CFL, compact fluorescent tube, lifetime < 20.000 h
- Circline lamps >10 - <15 mg mercury

**From 24 August 2023, the following light sources will be phased out:**

- CFL, compact fluorescent tube, lifetime > 20.000 h
- T5 fluorescent tubes
- T8 fluorescent tubes

**From 23 February 2027, the following light sources will be phased out:**

- HPS High pressure sodium lamps
- MH Metal halide lamps



[www.luglightfactory.com](http://www.luglightfactory.com)