

Lighting for logistics centres



LUG Light Factory

We are a manufacturer of LED lighting for professional applications with over 35 years of experience. Since 1989 we have been going off the beaten track and deliver groundbreaking sustainable lighting solutions. We are present in more than 75 markets worldwide, delivering the most demanding projects. Our extensive product portfolio, which includes more than 6,000 different luminaire versions, our vast knowledge and experience enable us to provide comprehensive solutions and services of the highest quality. In addition to a wide range and professional lighting solutions, we offer advice from our team of lighting designers, architects and technical advisors. This enables us to provide support at every stage of even the most complex projects.

LUG is a lighting brand inspired by passion, ambition and entrepreneurial spirit.

We operate internationally, with our regional offices located in 6 countries. We take a holistic approach to our solutions, from the concept to the finished product in the Administration, Production and Warehousing Centre in Zielona Góra and at the Research and Production Centre in Nowy Kisielin near Zielona Góra. Our third factory is located in Argentina. We specialise in infrastructure, industrial and architectural lighting for both indoor and outdoor applications. Our products illuminate roads, parks, factories, buildings, commercial spaces as well as architectural and sports facilities around the world. Commercial lighting is a key element of any space, both outdoors and indoors, having a significant impact on the atmosphere, productivity and overall aesthetics of the place. In today's dynamic environment, the right lighting not only serves a practical function, but is also an important part of a company's marketing, image and sales strategy.

Why cooperate with LUG LIGHT FACTORY

Choosing us, you are betting on working with an experienced industry leader and products in line with the latest trends in design and technology!

Our lighting solutions are tailored to the unique needs of each project, making each space shine brightest.

Energy efficiency:

Reduction in operating costs thanks to superior LED technology and dedicated control systems of up to over 80%. Sustainable solutions in line with environmental trends, helping to achieve LEED (Leadership in Energy and Environmental Design) or BREEAM (Building Research Establishment Environmental Assessment Method) certification.

Safety and comfort:

High-quality spatial lighting ensures visual comfort, while dedicated emergency lighting solutions enhance the sense of safety. Adequate illumination in car parks and pedestrian walkways enables safe access to and departure from storage areas.

Tailor-made solutions:

Custom or bespoke products - tailored lighting solutions that take into account the specifics of your facility, type of business and aesthetic preferences.

Experience and professionalism:

Over 35 years of experience in the lighting industry.

Individual approach to the client:

Adapting solutions to specific needs and requirements in line with normative requirements.

Top quality products:

Certified and European-compliant solutions prepared to work in the most demanding environments.

Modern technologies:

Intelligent lighting control systems for maximum efficiency.

Ecological and energy-efficient solutions:

Reduction of CO2 emissions and maximum energy savings.

Support at every stage of implementation

Technical advice, design and implementation of a complete lighting system.

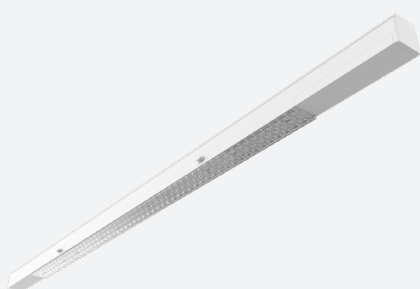




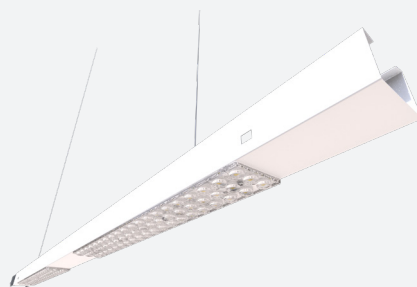
Selected products

Proper lighting of warehouses

according to EN-12464-1 norm



LUGTRACK EVO 2.0



LUGTRACK SLIM LENS



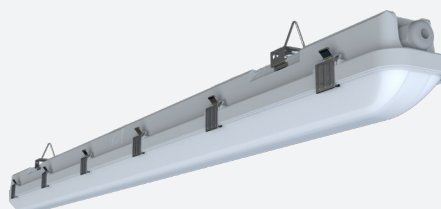
CRUISER 2 LED



TRITON LED



LCS DOWNLIGHT



LCS WATERPROOF

1

Packaging area

- Em - 300 lx
- Ra ≥ 80
- Uo $\geq 0,50$

2

Loading and unloading area

- Em - 200 lx
- Uo $\geq 0,40$
- Ra ≥ 80

3

Storage

- Em - 75 lx
- Ra ≥ 80
- Uo $\geq 0,40$

4

Shelving

- Em - 150 lx
- Ra ≥ 80
- Uo $\geq 0,50$

5

Parking

- Em - 20 lx
- RGL < 50
- Ra ≥ 20
- Uo $\geq 0,250$





Proper lighting of the storage area is key to safe management

Safety - adequate lighting minimises the risk of accidents and collisions by providing better visibility in traffic and operational areas.

Comfort at work - well-chosen light reduces eye fatigue, improves concentration and contributes to the well-being of employees.

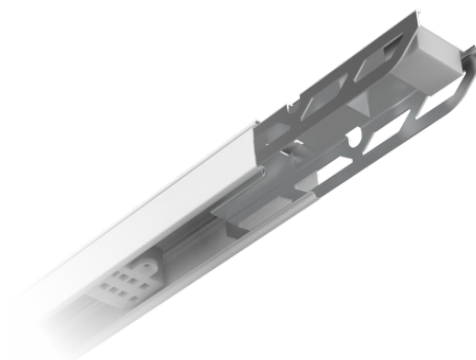
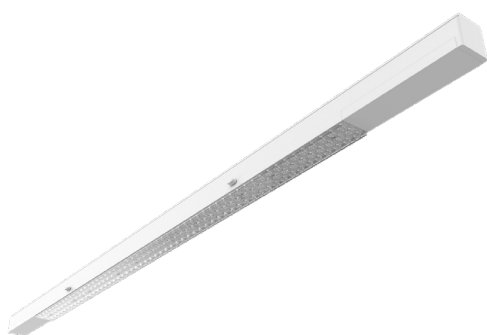
Operational efficiency - clear marking of working areas, improved visibility of labels and goods speeds up logistics and warehouse processes.

Impact on staff turnover - ergonomic working conditions, including high quality lighting, reduce absence and staff turnover, resulting in operational stability.

Energy saving - LUG Light Factory's modern solutions with control systems consume less energy and require less maintenance, which reduces operating costs.

Compliance with standards - proper lighting ensures compliance with regulations on working conditions and safety.

Warehouse space



LUGTRACK EVO 2.0

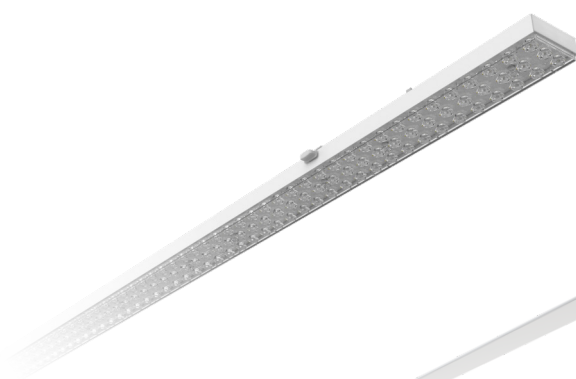
Modular and functional lighting system adapted to the needs and standards of warehouses.

Efficient light management thanks to dedicated optics (2xAS, 30°, 60°, 90°).

Above-average efficiency - up to 170 lm/W.

Easy installation and modular design allows the creation of long light chains.

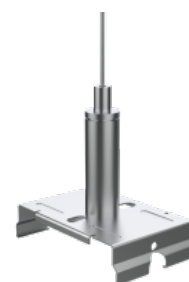
power	75 - 133 [W]
luminaire flux	12 600 – 20 600 [lm]
efficacy	153 - 170 [lm/W]
colour temperature	4000
ULOR/DLOR	0% / 100%
power supply	220-240V 50/60Hz
lifetime L90B10	82 000 h (L70B10)
body	aluminium, sheet steel
colour	white
operating temperature	0°C ... +35°C



masking
frame



starter kit



mounting
bracket

Warehouse space



power	86 - 399 [W]
luminaire flux	10200 - 62000 [lm]
efficacy	97 - 170 [lm/W]
colour temperature	4000
ULOR/DLOR	0% / 100%
operating temperature	-40 ... +45 [°C]

CRUISER 2 LED FAMILY

ENEC certification

HACCP certification

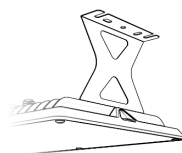
Nine dedicated optics

Variability

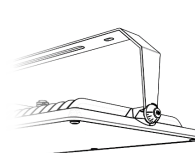
Extensive customisation options

Efficiency up to 170 lm/W Six

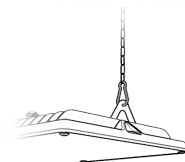
Mounting options:



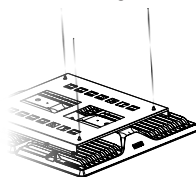
Bracket
surface mounting



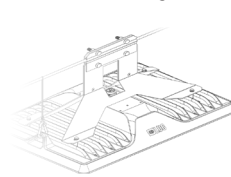
Adjustable bracket
surface mounting



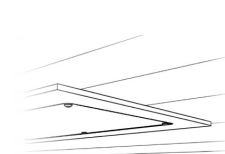
Hanging on
chains or rope



Mounting frame
for the installation of two
luminaires



Bracket
to hang on the line



Mounting frame
for SLAT ceilings





TRITON LED FAMILY

ENEC certification

HACCP certification

Four dedicated optics

Easy, one-person installation

Two accessory diffuser variants

Availability with motion sensor

Wide lumen output range in a small size

Efficiency of up to 180 lm/W

power	61 - 221 [W]
luminaire flux	10150 - 35650 [lm]
efficacy	140-180 [lm/W]
colour temperature	4000
ULOR/DLOR	0/100
operating temperature	-30 ... +40, -30 ... +50 °C



Logistics centres are not just about storage space

Proper office lighting for a comfortable working environment

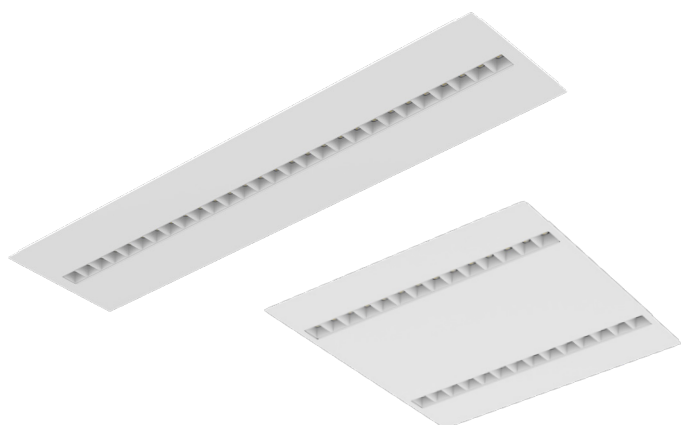
Employee health and comfort - adequate lighting in office spaces reduces eye fatigue, headaches and improves concentration, resulting in better productivity.

Efficiency and productivity - well-chosen light enhances the ability to focus on tasks, improving the quality and pace of work performed.

Work safety - the elimination of flicker and uneven lighting reduces the risk of errors and injuries in office work.

Optimal conditions for videoconferencing and computer-based tasks- lighting adapted for use with screens reduces reflections and improves image quality, which is essential in a logistics environment





OFFICE MINI 2.0

High light uniformity UGR<19

Two available sizes

Efficiency up to 159 lm/W

Lifetime 100,000 h for L80B10

power	17 - 30 [W]
luminaire flux	2550 - 4550 [lm]
efficacy	143 - 159 [lm/W]
colour temperature	3000, 4000
UGR	<19
operating temperature	0°C ... +35°C

OFFICE MINI 2.0 is a modern, compact modular luminaire designed specifically for offices, conference rooms, the retail segment including co-working spaces and sophisticated commercial interiors. Its minimalist design and advanced glare-minimising technology ensures comfortable, energy-efficient and high-quality lighting.



RELUG

An ecological step forward in lighting modernisation.

In response to increasing demands for energy efficiency, sustainable development and reduction of CO₂, we are introducing a new product. The insert is designed for installation in standard luminaires as a replacement for T5 or T8 fluorescent lamps. It is an innovative solution that allows existing lighting installations to be retrofitted.

power moc	15 - 36 [W]
luminaire flux	2500 - 6000 [lm]
efficacy	142 - 167 [lm/W]
colour temperature	3000, 4000
UGR	<19
operating temperature	0°C ... +35°C

The use of highly efficient LED modules enables significant reductions in energy consumption, enhances lighting quality, and supports environmental sustainability.

Staff room



LCS DOWNLIGHT

Diameter: 110, 165, 220

IP54

1300 - 5150 lm

On/Off, DALI

Interchangeable matt rings (black, gold, silver)

110 mm white 3 000 [K]	1 250 lm	119 lm/W
110 mm white 4 000 [K]	1 400 lm	133 lm/W
165 mm white 3 000 [K]	2 600 lm	141 lm/W
165 mm white 4 000 [K]	2 800 lm	151 lm/W
220 mm white 3 000 [K]	4 700 lm	145 lm/W
220 mm white 4 000 [K]	5 100 lm	157 lm/W



Loading area and access roads





Traffic safety - well-lit loading areas and access roads minimise risk of collisions and accidents, improving visibility for drivers and forklift operators.

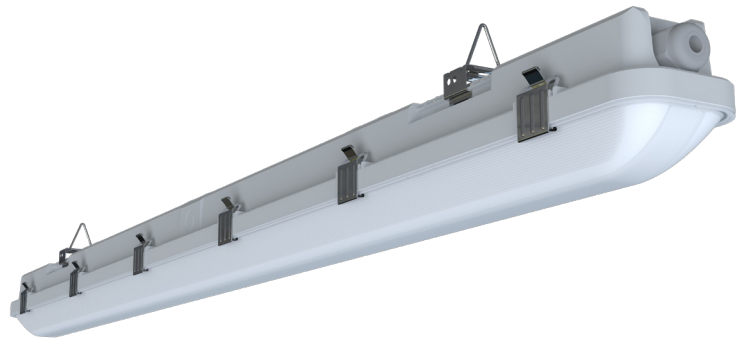
Operational efficiency - adequate visibility improves loading and unloading, reducing the time required for logistics operations.

Work comfort - high quality lighting reduces visual fatigue for employees and improves their concentration, which affects productivity.

Safe operation at night and in difficult weather conditions - optimum illumination of the access roads allows vehicles to manoeuvre smoothly and safely in all weather conditions.

Regulatory compliance - proper illumination of outdoor spaces meets normative requirements and standards safety in logistics centres.

Loading area and access roads



LCS WATERPROOF

1200 & 1500 mm

IK08 | IP66

6350 – 8350 lm

Dip Switch

Up to 168 lm/W

1200 mm

6 350 lm 164 lm/W

5 500 lm 167 lm/W

4 700 lm 168 lm/W

3 800 lm 168 lm/W

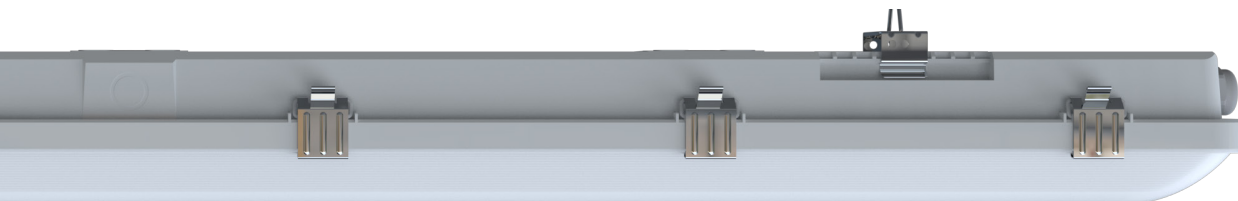
1500 mm

8 300 lm 165 lm/W

7 250 lm 168 lm/W

6 150 lm 168 lm/W

5 000 lm 168 lm/W







Loading area and access roads



POWERLUG

Efficient, energy-saving and long-lasting lighting solutions, designed to illuminate facades, car parks, industrial facilities, sports grounds and outdoor spaces. Provides intense and even light, improving the safety and aesthetics of the environment.

- High efficiency of up to 178 lm/W
- Modern design
- Simple one-man assembly
- Above-average lifetime

Application:
roads, facades, warehouses,
underground, industrial facilities,
car parks

power	25 - 155 [W]
luminaire flux	2950 - 25100 [lm]
efficacy	101 - 178 [lm/W]
colour temperature	3000, 4000, 5700
power supply	220-240V 50/60Hz
lifetime L80B10	100 000 h
body	High pressure die-cast aluminium
colour	gray
operating temperature	-40°C ... +55°C

Loading area and access roads

CRUISER ARENA

ENEC certification

Six available optics

Cable-mounted power supply

Double arm as an accesory

power	395 – 399 [W]
luminaire flux	47 100 – 62 000 [lm]
efficacy	do 157 [lm/W]
colour temperature	4000 - 5700
ULOR/DLOR	0% / 100%
operating temperature	-40 ... +35°C





URBINO

ENEC and ENEC+ certification

Smart-Ready luminaire certified ZhagaD4i

Universal mounting bracket 30°

Tool-free access to power supply compartment

IK09 | IP66

Efficiency up to 181 lm/W

DarkSky certification

Innovative design

power	23 – 157 [W]
luminaire flux	400 - 30700 [lm]
efficacy	79 - 181 [lm/W]
colour temperature	3000 - 5700 [K]
ULOR/DLOR	0% / 100%
operating temperature	-40 ... +55 [°C]



URBINO S

ENEC and ENEC+ certification

Smart-Ready luminaire certified ZhagaD4i

Universal mounting bracket 30°

Tool-free access to power supply compartment

IK10 | IP66

Efficiency up to 181 lm/W

DarkSky certification

Innovative design

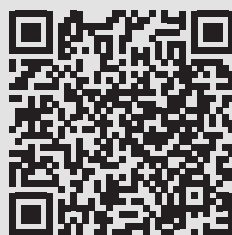
power	4,5 – 74 [W]
luminaire flux	400 – 11 350 [lm]
efficacy	79 - 181 [lm/W]
colour temperature	2200 - 4000 [K]
ULOR/DLOR	0% / 100%
operating temperature	-40 ... +55 [°C]



www.lug.com.pl

Contact us

LUG Light Factory
ul. Gorzowska 11
65-127 Zielona Góra
e-mail: lug@lug.com.pl
tel.: + 48 68 45 33 200



See LUG professional
lighting (storage spaces)